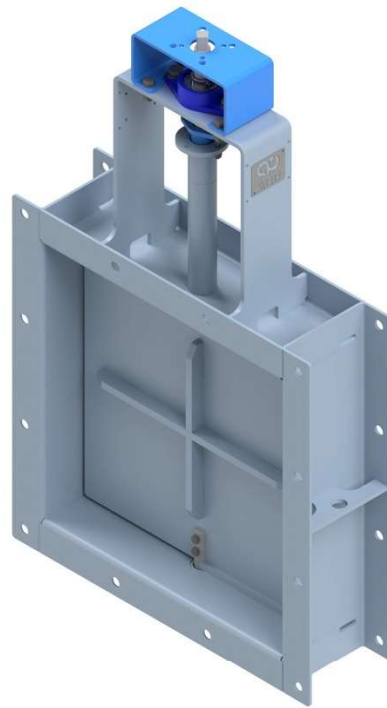
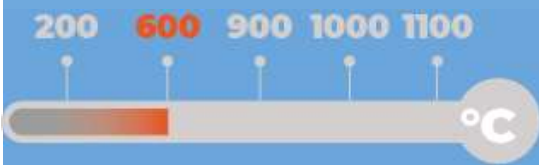


## Multi louver damper for gases Type RS-M21 Series

Size range upon request  
Interception or modulating service  
Designed for 200 mm of insulation  
CE marking

Max temperature 600°C



### Operating conditions

- ◆ Design temperature  $-40^{\circ}\text{C} \div 600^{\circ}\text{C}$
- ◆ Design pressure  $-0,1 \text{ barg} \div 0,5 \text{ barg}$

### Applicable standards

- ◆ Design EN 593, EN 12516, ASME B16.34
- ◆ Flanges according to customer request
- ◆ Testing EN12266, ANSI / FCI70-2

### Ends connections

- ◆ Bolted flanges

### Blade seals options

- ◆ No seal                      Geometric tightness 96%
- ◆ Metal to metal            FCI 70-2 max tightness class II
- ◆ Harmonic steel            FCI 70-2 max tightness class II / III lamellas
- ◆ Soft sealing                FCI 70-2 max tightness class III
- ◆ Air sealing                 Perfect tightness with pressurized air chamber

### Valve actuation

Top flange connections: EN ISO 5210, EN ISO 5211

Actuator types:

- ◆ Manual with lever or handwheel
- ◆ EN 15714-2 Electric actuators
- ◆ EN 15714-3 Pneumatic actuators

### Shaft seals options

- ◆ Graphite braid packing
- ◆ Braid packing with lantern ring
- ◆ Seal air cleaning system on shaft

### Materials

- ◆ CORTEN A
- ◆ EN 10028-2 steels for high temp.
- ◆ Ferritic, and austenitic stainless steels

### Bearing options

- ◆ One external bearing
- ◆ Duple shaft with two external bearings